

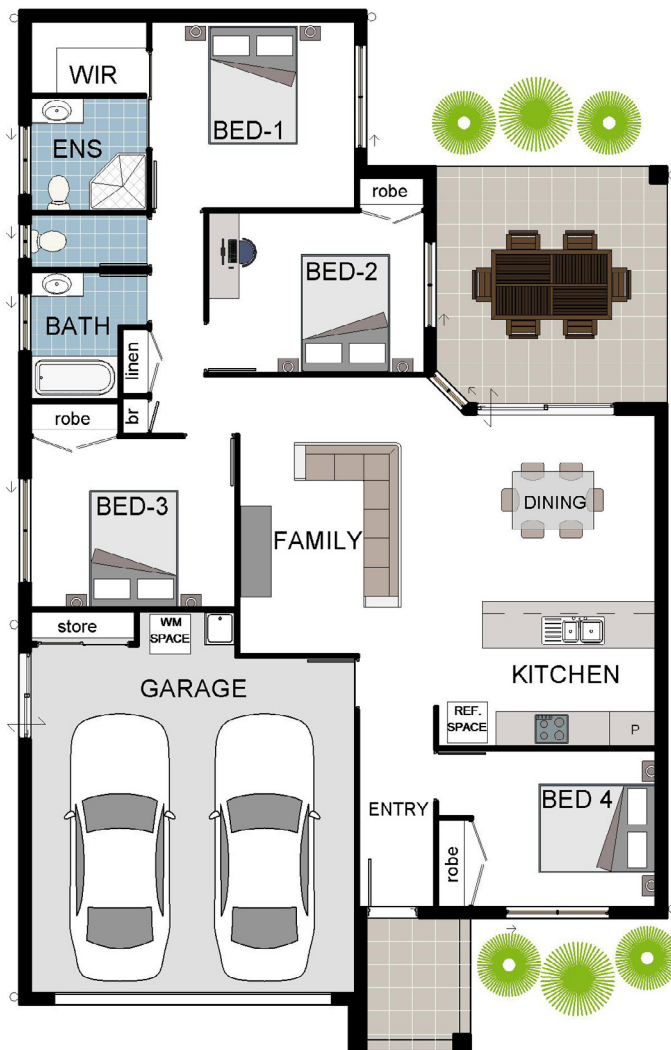
# Alpha 3A

4  2  2  1 

Illustration only



People Who Research First Choose to Build with Grady Homes!



## Peace of Mind Guarantees:



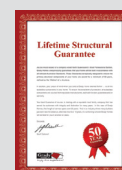
Fixed Price Guarantee



5 Month Build Guarantee



12 Month Defect Warranty



Lifetime Structural Warranty

## total areas

Living	116.49m <sup>2</sup>
Garage	38.08m <sup>2</sup>
Alfresco	16.23m <sup>2</sup>
Porch	4.38m <sup>2</sup>

# Alpha 3A

4  2  2  1 

