

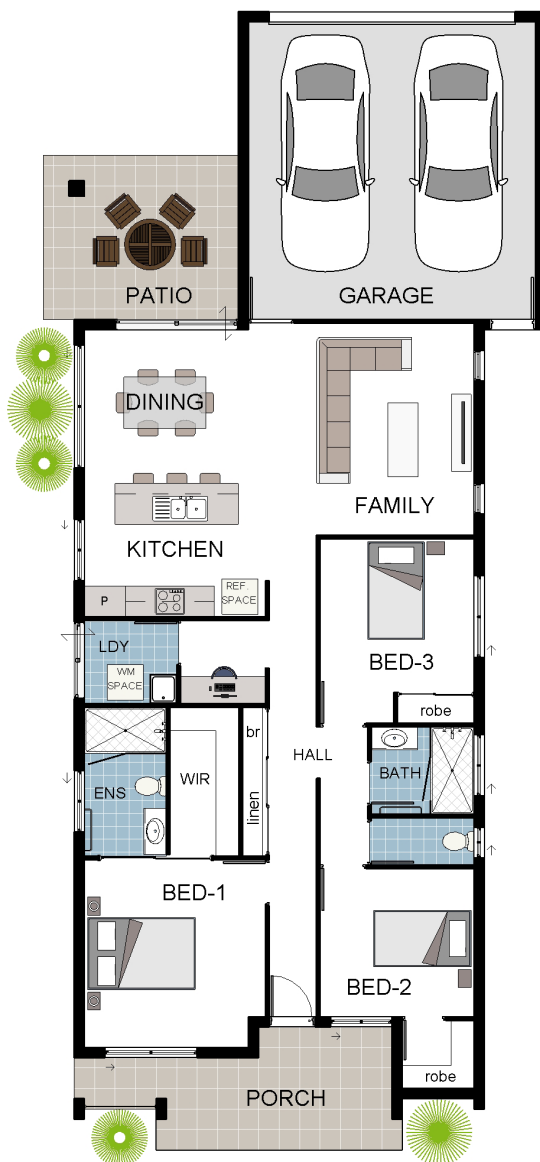
Brighton 2A

3 2 2 1

Illustration only



People Who Research First Choose to Build with Grady Homes!



Peace of Mind Guarantees:



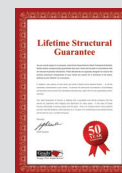
Fixed Price Guarantee



5 Month Build Guarantee



12 Month Defect Warranty



Lifetime Structural Warranty

total areas

Living	115.40m ²
Garage	36.24m ²
Alfresco	12.60m ²
Porch	12.16m ²



Phone 4795 0900
info@gradyhomes.com.au
www.gradyhomes.com.au

176m² total area

Brighton 2A

3  2  2  1 

