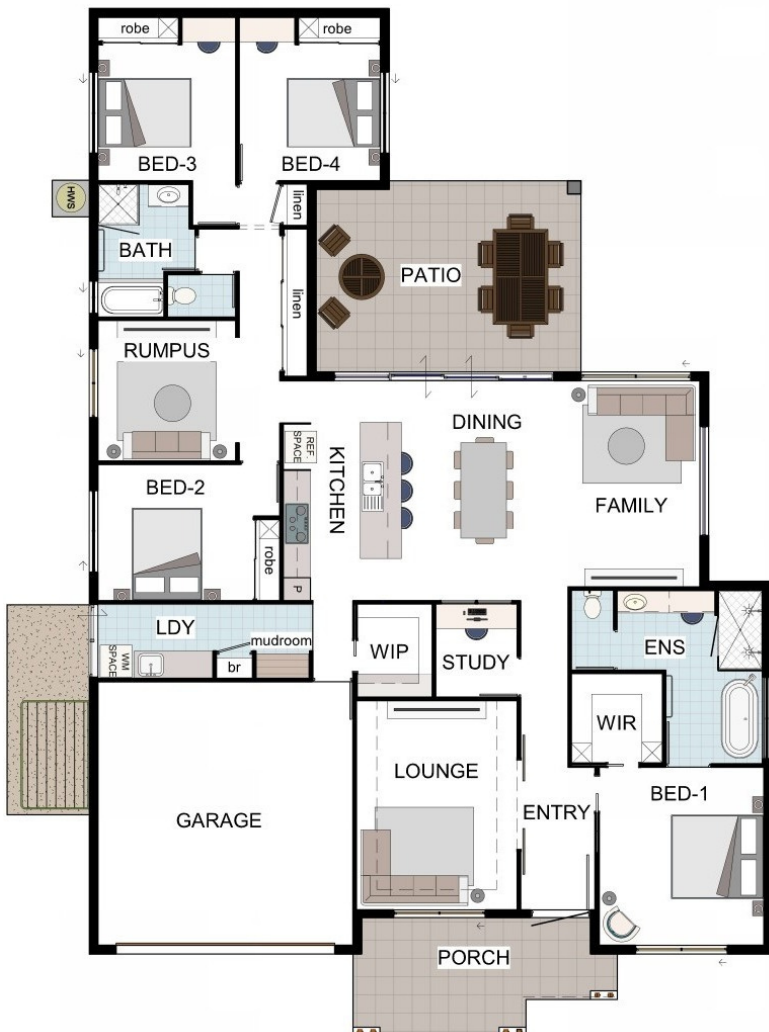


Mia 1

North Shore Display



PEOPLE WHO RESEARCH FIRST CHOOSE TO BUILD WITH GRADY HOMES



Fixed Price Contract Guarantee



12 Month Defect Warranty



Lifetime Structural Warranty

TOTAL AREAS

LIVING	192.63
GARAGE	34.95
ALFRESCO	24.06
PORCH	12.83



Phone 4795 0900
info@gradyhomes.com.au
www.gradyhomes.com.au

264m² total area

Mia 1

North Shore Display

